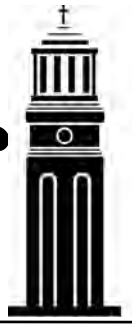


# The Broadcaster

Rose City Park Presbyterian Church

September/October 2010



In a few short weeks we will again be worshipping in our sanctuary. The congregation has weathered the transition well. Some have even said, "We need to worship in the fellowship hall now and then, maybe one month during the summer!" I believe that we have gotten closer to each other through the summer; the physical space *required* that we be a bit closer.

While in Minneapolis at the 217<sup>th</sup> General Assembly, I had the opportunity to present to a committee of about 75 persons the changes that were happening in our sanctuary. The Presbyterians For Disability Network was impressed with our progress in making our building more accessible for attendance and worship leadership. Church leaders across the country have been following our progress through our Facebook page. With the median age of a Presbyterian now being 60, it was wonderful to have affirmed how our vision and work now is going to enable folks to keep participating within our worship community. It was noted that this year is the 20<sup>th</sup> anniversary of the Americans With Disability Act. With that in mind, I hope that when you return upstairs, you will notice the changes that make our worship space more accessible and welcoming:

- Door handles that arthritic hands can open with ease.
- Railings to assist folks up the two steps to the chancel platform.
- Larger chancel area allowing more flexibility.
- Fewer steps to get up to the choir area (or the ramp for no steps!).
- Darker wood trim on the steps to make it easier to see the levels when descending them.
- A ramp that allows people with walkers and wheelchairs to gain access to the chancel for singing in the choir or assisting in worship.
- Six places for people assisted by wheelchairs or walkers to sit next to others.
- An ADA restroom for both genders on the main level near the worship space.
- Improved lighting on the chancel.
- Improvements to the sound system.

In addition to the above, the project includes:

- The addition of the French doors to help make a better distinction between the parlor and the sanctuary.
- Enhancing the architectural aspects of the sanctuary, including the cut-out cross which makes a dramatic statement while still allowing the opportunity to enjoy the dorsal, and installation of rods that are easily lowered and raised for complementary side fabric panels.
- Placement of the organ and piano to allow better sight lines for the organist with the worship leader, choir director, and the occasional bride.
- The organ chambers are now evenly balanced and the trim is uniform; other trim in the room has been cleaned.
- The lighting system is programmed for different types of worship services and special events in the sanctuary.
- There is a designated space for the baptismal font.
- To some degree a movable pulpit.
- Lastly, the orange carpet is history.

We have spent time and money to make our building more accessible and welcoming. But accessibility is not just a question of mortar and bricks; it is a matter of the heart. The religious traditions that challenge and inspire us to make our hearts more accessible are the greatest resource we as a congregation can have in wishing to offer a spiritual home to people with disabilities. As we become more accessible, spiritually as well as physically, we will contribute to healing the pain felt by the disabled community and of society as a whole.

In all truthfulness, we have just begun our work as a faith community.

Grace and Zeal,

*David*

Rev. David C. Dornack

## SANCTUARY DEDICATION SEPTEMBER 19<sup>TH</sup>

Prepare yourselves for a morning of celebrating and rejoicing! The sanctuary will be cleared, clean and ready for our long-anticipated return on Sunday, September 19<sup>th</sup>. Our worship committee and staff are planning a festive worship to rededicate our lovely, accessible worship space. Invite your friends and acquaintances. Let's see if we can carry the feeling of closeness we have experienced in our fellowship hall worship into the more expansive space of the sanctuary.

And perhaps we'll learn the answers to those burning questions: Where will the Chancel Choir stand and what will they sit on? How will the bell choir sound in their new home at the front of the sanctuary? Have we created enough spaces for people in wheel chairs to sit comfortably?

See you in the sanctuary. We can't wait!

## CHANCEL REMODEL UPDATE

The overall project is moving ahead nicely. Due to the addition of refinishing the sanctuary floor (under the pews) and the additional work needed for the dorsal/cross doors, ten days have been added to the project. The completion date for the contractor's portion of the project is August 26<sup>th</sup>. Then the sanctuary and parlor will have a final cleaning, and the lighting system will be programmed and adjusted. The new sound system will be installed at the end of the construction project. It will include a new main speaker and a speaker for the choir area, along with new amplifiers, a mixer, and other equipment to support the new speakers.

New carpet has been installed on the stairs to the balcony and up to the tower room. This was not part of the chancel project and has been funded by contributions from some members of the congregation.

In the original plan, the pews removed from the sanctuary were to be installed in the balcony. However, modifying the pews to fit the balcony space and altering the adjacent steps would have been very costly to bring it up to code. After wrestling repeatedly with the balcony issues, the committee decided to leave the balcony as it was and donate the pews to Habitat for Humanity.

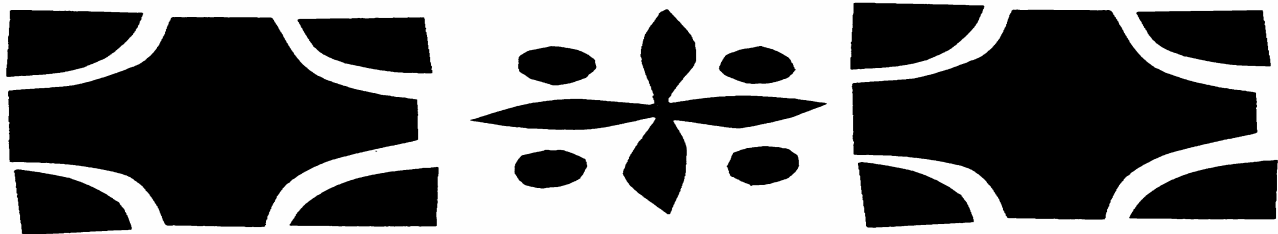
The purchase of choir chairs and risers will be delayed. Glenda McKibben, our Choir Director, requested that we wait until we have experienced the new space to determine what will be best for our needs.

A few items were eliminated from the chancel project due to budget restraints:

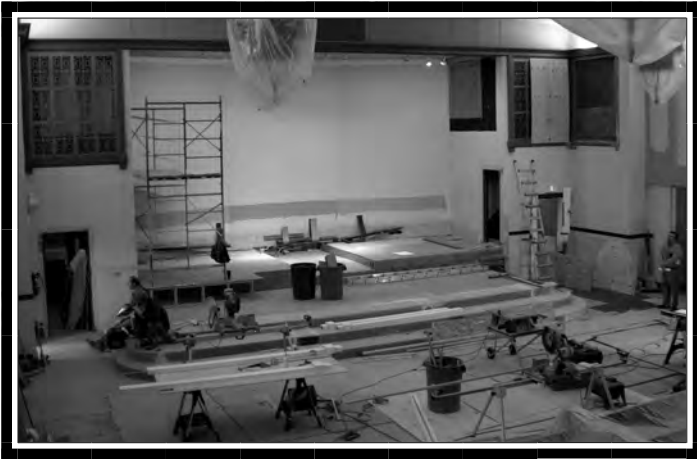
- A stained glass window on the north wall of the sanctuary (above parlor doors)
- Modesty panels in choir area using the mahogany screen removed from chancel
- New speakers under the balcony
- A dimming control at the sound desk for lights in the sanctuary and on the chancel
- Improved recording of services (flash card/cd recording)
- Upgraded ventilation system in the sanctuary

We are on track to dedicate our worship space on September 19, 2010.

— Wayne and Linda Knepper, Co-chairs  
Chancel Improvement Committee



# DEDICATION



View from the balcony into the chancel



View from the balcony as the workers are building the sliding doors of the dossal



The dossal doors, framed and halfway finished



Completed sliding dossal doors with cross outline



Almost completed French doors leading into the parlor from the sanctuary



Wood floors of the platform

# ROSE CITY FAMILY NEWS

## Weddings

**Kathryn Mary Boeh** was wed to Nicole Sangsuree Barrett on July 17<sup>th</sup> at the Thyme Garden in Alsea, Oregon. Parents are Steve and Nancy Boeh.

**Tyler Steven Boeh** wed Miranda Ann Shea, August 7<sup>th</sup> at Zenith Vineyards, in Salem Oregon. Parents are Steve and Nancy Boeh.

**Nicole Marie Amling** married Chad Michael Betz on August 14<sup>th</sup> at Horning's Hideout in North Plains. Parents are Ray and Kris Amling; grandparents are John Amling and Howard and Veona Postlewaite.

## New Babies

**Willa Grace Ramsey** was born June 10<sup>th</sup> in Portland to Eleanore and David Ramsey. She joins sister Eve. Grandparents are David and Rebecca Jewel.

**Courtney Margaret Schoof** was born May 25<sup>th</sup> in McMinnville to Aron and Treva Schoof. She joins brothers Austin and Brady. Great-grandmother is Catherine Collins.

## With Sympathy

**Einar Linstad**, father of Gretchen Gubert, died on May 29<sup>th</sup> in Portland. Services were held on June 12<sup>th</sup>.

## Thank You

I want to thank you for the opportunity to preach at your June 20<sup>th</sup> ser-

vice. I also want to express my deep gratitude for the support financially and through prayer you have offered me as I continue the journey that is seminary.

— Blessings & Peace,  
Amanda Golbek

A heartfelt thank-you to members of my church family who sent prayers and condolences after my father passed away on May 29<sup>th</sup>. Dad lived to be ninety years old and died peacefully - yet it is still painful to lose a parent. Please know your thoughtful response really made a difference for me and my family.

— Gretchen Gubert

Dear Rose City –  
Thank you for the Bible along with the best wishes. I'll treasure it always. Thank you for thinking of me.

— Ellie Koprowski

Thank you for all the cards, well wishes and prayers after my recent surgery. It is truly a blessing to be part of such a caring community.

— Glenda McKibben

## Directory Changes

**Grace Shibley**, 2534 SE 30<sup>th</sup> Ave.,  
Portland, OR 97202,  
[grace.shibley@gmail.com](mailto:grace.shibley@gmail.com)  
**Jeremy Shibley**,  
[jeremyshibley@gmail.com](mailto:jeremyshibley@gmail.com)

## CALL FOR WORSHIP MUSICIANS

Chancel Choir rehearsals begin on Thursday, September 9<sup>th</sup> with a rehearsal from 7:30 – 8:30 p.m. in the chapel. Singers of all abilities are welcome to join in the Thursday evening rehearsals.

For those who cannot make the commitment to Thursday evenings, please consider joining us on the second Sunday morning of each month at 9:30 a.m. for Once-a-Month Choir, beginning October 10<sup>th</sup>. School age children are welcome with parents. We rehearse a simple piece and then sing during worship.

If you are interested in ringing with the hand bell choir, contact Organist and Bell Choir Director Sarah Shay. This group meets intermittently for about four weeks at a time to prepare a piece for worship.

And finally, I invite anyone of any age, men and women, boys and girls interested in creating some movement pieces for worship, to contact me. We have this wonderful new space to fill with music and movement.

— Glenda McKibben,  
Chancel Choir Director

---

## CHRISTMAS EVE SERVICE: SHOULD WE CHANGE THE TIME?

The Worship and the Arts Committee hopes you will share your thoughts in this short survey about changing the time of the Christmas Eve services. At present we plan to keep the 5 o'clock service and are looking at changing the time of the late service. So, please fill out our survey and return it to church office or offering plate by October 3<sup>rd</sup>.

Which Christmas Eve service do you normally attend?

\_\_\_\_\_ 5:00 p.m.                      \_\_\_\_\_ 10:30 p.m.

If we changed the time of the late service, at which time would you be most likely to attend?

\_\_\_\_\_ 7:30 p.m.      \_\_\_\_\_ 8:30 p.m.      \_\_\_\_\_ 9:30 p.m.      \_\_\_\_\_ 10:30 p.m.

We are open to other suggestions; please share your thoughts:

---

## YOUTH NEWS

### IMPORTANT DATES FOR FAMILIES WITH CHILDREN AND YOUTH

#### October 3

Church school begins for all ages.  
(see article opposite)

#### October 22-24

Middle School Mania @ Camp Canyonview

#### November 19-21

CPYA for High School Youth @ Macleay, Salem

#### November 28

First Sunday of Advent: Advent Festival

#### December 19

Christmas Program

### FALL PROGRAMS FOR MIDDLE AND HIGH SCHOOL YOUTH

The High School Youth will focus on the servant nature of Christ and practice putting the needs of others before our own. This fall we will read the book *Under the Overpass* by Mike Yankoski. The book discusses the experiences of a young Christian who wanted to learn more about his faith and the nature of homelessness in the United States. He chose to leave his upper-middle-class life-style behind, and live as a homeless person for five months. We are also going to volunteer at Janus Youth Programs, a non-profit organization that operates Portland's two homeless youth shelters.

The Middle School Youth will also help volunteer at Janus Youth Programs. We will learn about having the heart of a servant through discussions, games, activities and fellowship.

Both groups will meet every Sunday following worship at 11:10 a.m. in the upstairs Youth Rooms, unless stated otherwise. MS indicates middle school youth; HS indicates high school youth.

9/26 ALS Walk – All

10/3 *Are we blessed?* & dessert planning – MS  
Book group & meal planning – HS

10/10 Prepare dessert for Janus Youth Programs – MS  
Prepare a meal for Janus Youth Programs –HS

10/17 Sunday School & Pre-Middle School Mania  
Meeting –MS  
Dollars for Donuts – HS

10/22 –10/24 Middle School Mania – MS

10/24 No High School Group

10/31 Halloween –All

## GET READY, GET READY! CHURCH SCHOOL BEGINS OCTOBER 3<sup>RD</sup>.

What do we have?

- A church filled with the spirit of newness and excitement that realizes that our business is raising young disciples and thinkers.
- A resource room filled with materials.
- A curriculum based on a modified version of “The Way of the Child” (adapted by Program Coordinator Donovan Burkert-Kerr to suit a variety of age levels) to explore the earliest organization of the people of Israel in the time of the judges and kings into and returning from the exile into Babylon.
- Five groups of children and youth, totaling 37 young people.
  - ❖ The nursery: Children from infancy through age 3
  - ❖ Preschool and Primary: age 4 through 1<sup>st</sup> grade
  - ❖ Elementary: 2<sup>nd</sup> through 5<sup>th</sup> grade
  - ❖ Middle School
  - ❖ High School

What do we need?

- **You.** Teachers and volunteers who are called to share the good news with energy and joy with our youth, from the youngest to the seniors in high school. There *is* a place for you. Members of the committee will be calling you to fill teaching slots for the preschool/primary and the elementary classroom, nursery care for Sunday mornings, and for help with the youth programs. Please say yes with enthusiasm and encourage your friends to say “yes” with you.



# CALENDAR

## September

**Wed. 1<sup>st</sup>**  
7 pm Worsh. & Arts Comm.

**Thurs. 2<sup>nd</sup>**  
6:30 pm Bell Choir

**Sat. 4<sup>th</sup>**  
8 am – 1 pm Hollywood Farmers’  
Market (HFM)

**Sun. 5<sup>th</sup>**  
10 am Worship

**Mon. 6<sup>th</sup>**  
**Labor Day**  
Building Closed

**Tues. 7<sup>th</sup>**  
7 pm Personnel Comm.

**Wed. 8<sup>th</sup>**  
10 am – 1 pm Martha Service  
7:30 pm Chancel Comm.

**Thurs. 9<sup>th</sup>**  
6:30 pm Bell Choir  
7:30 pm Chancel Choir

**Fri. 10<sup>th</sup>**  
10 am – 12 pm Writers  
10 am RCPPC serves Loaves &  
Fishes (L&F)

**Fri. 10<sup>th</sup>-Sun. 12<sup>th</sup>**  
Men’s Retreat @ Menucha

**Sat. 11<sup>th</sup>**  
8 am – 1 pm HFM

**Sun. 12<sup>th</sup>**  
10 am Worship

**Mon. 13<sup>th</sup>**  
7:30 pm Christ. Ed. Comm.

**Tues. 14<sup>th</sup>**  
7 pm Sarah Circle  
7 pm Build. & Grnds. Comm.

**Wed. 15<sup>th</sup>**  
1-2:30 pm Lectio Divina  
3 pm Chancel Comm.

**Thurs. 16<sup>th</sup>**  
6:30 pm Bell Choir  
7:30 pm Chancel Choir

**Sat. 18<sup>th</sup>**  
8 am – 1 pm HFM

**Sun. 19<sup>th</sup>**  
**Sanctuary Dedication**  
9:30 am Chancel Choir  
10 am Communion Worship

**Mon. 20<sup>th</sup>**  
7 pm Prayer Shawls

**Tues. 21<sup>st</sup>**  
7 pm Session

**Wed. 22<sup>nd</sup>**  
1:30 – 3 pm Searchers  
ChristCare

**Thurs. 23<sup>rd</sup>**  
7:30 pm Chancel Choir

**Fri. 24<sup>th</sup>**  
10 am – 12 pm Writers

**Sat. 25<sup>th</sup>**  
8 am – 1 pm HFM

**Sun. 26<sup>th</sup>**  
**BirthDay Sunday**  
9:30 am Chancel Choir  
10 am Worship  
12 pm ALS Walk – downtown

**Mon. 27<sup>th</sup>**  
10 am RCPPC serves L&F

**Thurs. 30<sup>th</sup>**  
10 am – 3 pm Red Cross Blood  
Drive  
7:30 pm Chancel Choir

## October

**Sat. 2<sup>nd</sup>**  
9 am – 1 pm HFM

**Sun. 3<sup>rd</sup>**  
**World Communion &  
Peacemaking Sunday**  
9:30 am Chancel Choir  
10 am Communion Worship  
10:20 am Church School Begins  
11:10 am MS & HS Youth  
11:20 am Adult Education

**Tues. 5<sup>th</sup>**  
7 pm Personnel Comm.

**Wed. 6<sup>th</sup>**  
10 am – 1 pm Martha Service  
7 pm Worsh. & Arts Comm.

**Thurs. 7<sup>th</sup>**  
7:30 pm Chancel Choir

**Fri. 8<sup>th</sup>**  
10 am – 12 pm Writers  
10 am RCPPC serves L&F

**Sat. 9<sup>th</sup>**  
9 am – 1 pm HFM

**Sun. 10<sup>th</sup>**  
9:30 am Chancel Choir  
10 am Worship  
10:20 am Church School  
11:10 am MS & HS youth  
11:20 am Adult Education  
12 pm Deacons

**Mon. 11<sup>th</sup>**  
7:30 pm Christ. Ed. Comm.

**Tues. 12<sup>th</sup>**  
7 pm Sarah Circle  
7 pm Build. & Grnds. Comm.

**Wed. 13<sup>th</sup>**  
1:30 – 3 pm Searchers ChristCare

**Thurs. 14<sup>th</sup>**  
7:30 pm Chancel Choir

**Sat. 16<sup>th</sup>**  
9 am – 1 pm HFM

**Sun. 17<sup>th</sup>**  
9:30 am Chancel Choir  
10 am Worship  
10:20 am Church School  
11 am HS Youth \$ for Donuts  
11:10 am MS Youth  
11:20 am Adult Education

**Mon. 18<sup>th</sup>**  
7 pm Prayer Shawls

**Tues. 19<sup>th</sup>**  
7 pm Session

**Wed. 20<sup>th</sup>**  
1-2:30 pm Lectio Divina

**Thurs. 21<sup>st</sup>**  
7:30 pm Chancel Choir

**Fri. 22<sup>nd</sup>**  
10 am – 12 pm Writers

**Fri. 22<sup>nd</sup>- Sun. 24<sup>th</sup>**  
MS Mania @ Camp Canyonview

**Sat. 23<sup>rd</sup>**  
9 am – 1 pm HFM

**Sun. 24<sup>th</sup>**  
**BirthDay Sunday**  
9:30 am Chancel Choir  
10 am Worship  
10:20 am Church School  
11:20 am Adult Education  
2 pm Bach Choir Concert

**Mon. 25<sup>th</sup>**  
10 am RCPPC serves L&F

**Wed. 27<sup>th</sup>**  
1:30 -3 pm Searchers ChristCare

**Thurs. 28<sup>th</sup>**  
7:30 pm Chancel Choir

**Sat. 30<sup>th</sup>**  
6 pm Harvest Festival Potluck

**Sun. 31<sup>st</sup>**  
**Halloween**  
9:30 am Chancel Choir  
10 am Worship  
10:20 am Church School  
11:20 am Adult Education

## LOOKING AHEAD

### Nov. 19

An evening with Oregon's Poet Laureate, Paulann Petersen, in the sanctuary. Save the Date!



### Nov. 19-21

CPYA @ Macleay Conference Center in Salem

### Nov. 24

Thanksgiving Eve Worship

### Nov. 28

Advent Festival following Worship

### Dec. 19

Christmas Program during Worship

## LECTIO DIVINA

*"It was books that taught me that the things that tormented me most were the very things that connected me with the people who were alive, or had ever been alive."*

— James Baldwin

Summertime is over and the time for reading moves indoors off the beach or out of the tent on vacation and into our homes and libraries for the fall. Settle into a comfortable seat with a warm and soothing cup and enter into another world and another place with a book and then...gather with your fellow readers to talk and discuss and deepen your understanding.

Gather on third Wednesdays at 1 p.m. in the chapel. These are the upcoming discussions.

**September 15:** *The Education of Harriet Hatfield* by May Sarton

**October 20:** *Little Bee* by Chris Cleave

## ADULT EDUCATION AT RCPPC BEGINS SOON!

The following is the planned schedule for October and November:

**October 3:** General Assembly 2010 Report

**October 10:** Presbyterianism 101 with Presbytery Stated Clerk Cathy Quackenbush

**October 17:** *The Invisible Child* with Gabby Robertson

**October 24:** Adults and their Aging Parents

**October 31:** Catholicism and the Ordination of Women

**November 7:** No Adult Education (Communion)

**November 14:** Supporting the Unemployed

**November 21:** RCPPC Mission Study

**November 28:** No Adult Education (Advent Festival)

Sessions are from 11:20 a.m. until noon. The Sunday bulletin indicates where that morning's session will meet. This year's Adult Education Committee consists of Bev Dale, David Dornack, Bob McGranahan, and Jeremy Shibley. We hope to provide worthwhile educational opportunities of interest to all who attend RCPPC, and we welcome input and ideas for future Adult Education offerings. Thank you in advance for your attendance. On Adult Education Sundays, the fellowship hall lights will flash at 11:15 a.m. as a reminder that 11:20 a.m. is nearing.

What learning will our faith journey require of us this year?

— Jeremy Shibley, Chair

## CHRISTCARE

Searcher's Christ Care resumes on Wednesday, September 22<sup>nd</sup> at 1:30 p.m. in the library. We will gather to learn of each others' summer activities and begin a new study for the year.

Feel free to join us if you are new to Rose City Park or haven't been a participant in the past. We look forward to a great time together. Contact David Dornack for more information.

## CLOSURES AND VACATIONS

The church will be closed on Monday, September 6<sup>th</sup> for the Labor Day holiday.

Program Coordinator Donavan Burkert-Kerr will be on vacation September 24<sup>th</sup> — October 1<sup>st</sup>.

## HARVEST FESTIVAL

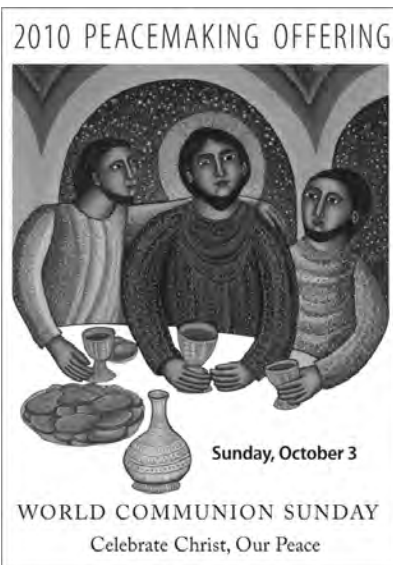
Save the date for a fun evening with your church family on Saturday, October 30<sup>th</sup>. While the event is still in the planning stage, rest assured that the Outreach Committee will organize a great evening for all. Watch the Sunday Bulletin and church website ([www.rosecityparkpres.org](http://www.rosecityparkpres.org)) and Facebook pages for details. Invite your family and friends.



## CELEBRATE CHRIST, OUR PEACE

“Whenever we open our hearts and lives by building relationships with one another or by caring for God’s creation, we ‘Celebrate Christ, Our Peace.’” This theme for the 2010 Peacemaking Offering come from the words of Paul who wrote to the Ephesians, “For he [Christ] is our peace; in his flesh he has made both groups into one and has broken down the dividing wall, that is, the hostility within us.” Paul was addressing divisions within the early Christian church. We face different issues today, but we still live divided from our neighbors – we see it on the road, in angry blog entries and letters to the editor, on Capitol Hill, through continued hatred and war in the Middle East, in suspicion and saber-rattling in western Asia.

On Sunday, October 3<sup>rd</sup>, as we celebrate World Communion Sunday, we will also dedicate our 2010



Peacemaking Offering. Through bulletin inserts, moments for mission and a congregation-wide mailing, you will have opportunities to learn more about how our gifts to the offering help make the world more peaceful. Together we can help to heal the misery in the world that causes division and strife, one small program at a time.

## HISTORY COMMITTEE WELCOMES PHOTOS

We need your photos of life at RCPPC! While we have fully arrived in the digital age, your history committee continues to make prints and create history albums. The church office staff now stores all photos on a computer, so please email, or bring on a disc, photos of church activities, group shots, work parties, etc. for future albums. If you’d like to view the history presentations done by Ethel Rieken, contact the office to make arrangements. Many thanks.

—Your History Committee:

Kathy Conklin, Susan Price, Cindy Robertson

## JOIN GANG GREENE



Support our friends Cynthia and David Greene as they assemble their team for the annual Walk to Defeat ALS Sunday, September 26<sup>th</sup>. We urge a rousing turn-out of Rose City Park Presbyterian Church walkers. The walk begins downtown at 12 noon; check-in begins at 11 a.m.

Join GANG GREENE, raise awareness of ALS, have fun, get a hat, and a T-shirt. For more information, watch the Sunday bulletin, call Charlotte Matthews at 503-284-3261, Rick Harlow at 971-563-1742, or Doug Robertson at 503-880-3525, or e-mail the Greenses at [reachingdeep@comcast.net](mailto:reachingdeep@comcast.net).

## DEACONS’ CORNER

Hopewell House Hospice is one of the organizations the Deacons’ Fund supports. Their “goal is compassionate, competent care for hospice patients and their families and friends.” The patient receives medical care that emphasizes symptom management and support for the whole person. Meals are customized for each patient. Bereavement counseling is available for family members and friends. Hopewell House is located in a peaceful, wooded setting in Southwest Portland. Thank you for giving to the Deacons’ Fund.

## PRAYER SHAWL MINISTRY

*“Let the favor of the Lord our God be upon us and confirm for us the work of our hands; yes, confirm the work of our hands.”* Psalm 90:17

Come to the church library on the 3<sup>rd</sup> Monday evening at 7 p.m. to knit or crochet with others whose hands are busy with love and support for those in need of comfort and warmth. Make a prayer shawl blessed by words of prayer and wordless sympathy or knit a hat for a cold and homeless head. Talk to Donavan if you need yarn or needles or a pattern. We can teach you if you want to learn. All eager hand-workers are welcome.



# 2010-11 CHURCH OFFICERS AND THEIR ASSIGNMENTS

The Session Elder and Deacon Committee assignments for 2010-11 have been finalized. If you have a question or concern regarding a particular aspect of our life together, it is often helpful to know which officers and at-large congregation members serve on the committee that may be able to answer your questions. Session Committees may be made up of Elders, Deacon representatives and congregation members. Corporate Officers are elected from the Session.

## Corporate Officers

Wayne Knepper, President  
Peter Bilotta, Vice President  
Roger Price, Secretary  
John Thoma, Treasurer

## Clerk of Session

Brian Emery

## Committees of the Session

### Adult Discipleship

Jeremy Shibley, Chair  
Bev Dale – C  
Bob McGranahan – C  
David Dornack, Staff

### Buildings & Grounds

Wayne Knepper, Chair  
Ray Amling – E  
Gail Black – C  
Craig Coe – C  
Jon Cole – C  
Rob McKibben – C  
Bill Wiese – C  
Bob Wininger – C  
David Dornack, Staff

### Christian Education

Ellen Ragan, Chair  
Gretchen Gubert – E  
Cynthia Church – C  
Katie Zalin – C  
Donavan Burkert-Kerr, Staff  
Tori Field, Staff

### Outreach & Communication

Rick Harlow, Chair  
Steve Smith – E  
Shannon Bromenschenkel – C  
David Dornack, Staff

### Personnel

Bob Black, Chair  
Darla Lindsey – E  
Woody Richen – C  
Cindy Robertson – D  
David Dornack, Staff

### Social Action

Doug Robertson, Chair  
Jim Munson – E  
Becky Duncan – D  
Diane Hanken – C  
David Dornack, Staff

### Stewardship & Finance

Peter Bilotta, Chair  
Roger Price – E  
John Thoma, Treasurer  
David Dornack, Staff

### Memorials Sub-Committee

David Bell – D  
Linda Knepper – C  
Ethel Rieken – C  
David Dornack, Staff

### Worship & the Arts

Brian Emery, Chair  
Nicole Amling – E  
Scott Greer – D  
Susan Linstedt – C  
David Dornack, Staff  
Glenda McKibben, Staff  
Sarah Shay, Staff

### Nominating Committee 2011

Karin Novitsky  
Judy Robinson  
Margie Davidson  
Woody Richen  
David Dornack, Staff

## Board of Deacons Officers

Kathy Conklin, Moderator  
Susan Price, Vice Moderator  
Cathy Butts, Secretary  
David Bell, Treasurer

David Dornack, Staff

## Deacons' Committees Visitation, Member Connections & Communication

Judy Robinson, Team Leader  
Susan Price, Team Leader  
Karen Balmer  
Cindy Robertson

## Coffee Fellowship & Greeters

Kathy Conklin, Team Leader  
Becky Duncan  
Randi Weber  
Irene Wininger

## Ushering

Sharon Cousineau, Team Leader

## Tape Copying

Scott Greer, Team Leader

## Transportation

Donia Groff, Team Leader

## Produce Table

Becky Duncan, Team Leader

## St. Michael Monthly Meal

Lorna Cole, Team Leader

## Financial

David Bell, Team Leader  
Nat Kerr, Team Leader

**Rose City Park  
Presbyterian Church**  
1907 NE 45th Avenue  
Portland OR 97213

Non-Profit Org.  
US POSTAGE PAID  
Permit #634  
Portland, Oregon

**RETURN SERVICE REQUESTED**

**ROSE CITY PARK  
PRESBYTERIAN CHURCH**

phone 503-282-0965

fax 503-288-5828

office@rosecityparkpres.org

www.rosecityparkpres.org

**SUNDAY SCHEDULE**

WORSHIP at 10:00 AM

CHURCH SCHOOL SCHEDULE

9:30 am nursery

10:20 am Grades Pre-5

11:10 am Youth

11:20 am Adult

**CHURCH STAFF**

- David C. Dornack, Pastor  
david@rosecityparkpres.org
- Donovan Burkert-Kerr, Program  
Coordinator  
donovan@rosecityparkpres.org
- Tori Field, Youth Activities Coord.  
tori@rosecityparkpres.org
- Glenda L. McKibben, Chancel Choir Dir.
- Sarah S. Shay, Organist & Bell Choir Dir.
- Romalia Stickney-Shibley,  
Office Manager
- Michelle Veazie, Receptionist
- Roberto Del Rio, Custodian
- Gerry Mohr, Sexton

**SANCTUARY DEDICATION**

Sunday September 19, 2010  
10 a.m. communion worship  
*with* invited guests,  
chancel and hand bell choirs

All are invited and welcome!

**NEXT BROADCASTER DEADLINE: SUNDAY, OCT. 17.**

Brief articles may be submitted in person, by mail, or via e-mail to romalia@rosecityparkpres.org, and must be in the church office by the end of the day Sunday, Oct. 17. The issue will cover November and Advent news.